



This award winning venue is in daily use providing ongoing workshops and training events related to healthy and sustainable living. The Pines Calyx is also available for hire for independent events, weddings and other ceremonies.

The building is an exemplar in low carbon design, blending centuries old construction methods with 21st century technologies.

The building is open periodically for public viewing. Visit the website for times of opening and for further information on community art initiatives being held in the garden and the Pines Calyx. Adjacent to the building is the **Demo Dome**, open at all times, with information on this unique building.

[www.pinescalyx.co.uk](http://www.pinescalyx.co.uk)  
email: [enquiries@pinescalyx.co.uk](mailto:enquiries@pinescalyx.co.uk)

## The Pines Tea Room & Museum

Relax in the Tea Room or sit outside and sample mouth watering local produce. The Tea Room serves hot and cold drinks along with freshly made sandwiches, light lunches and delicious homemade cakes.



The Museum features changing displays on environmental themes and local history.

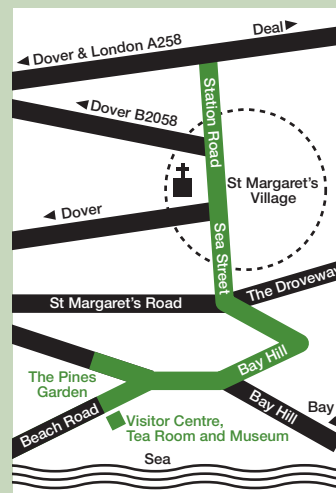
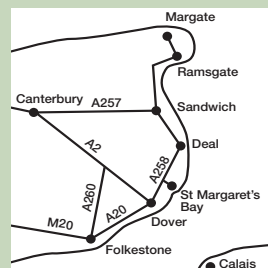
## Visiting The Pines Garden

St. Margaret's Bay is the closest point of the British mainland to France, and is 4 miles North East of Dover.

**There are plenty of options for getting to the garden, apart from driving.**

- Bus** - Regular services to and from Dover and Deal.
- Train** - Regular services to Dover and Martin Mill.
- Cycle** - Sustrans National Route 1 runs through the village.
- Walking** - There are glorious walks from Dover and Deal along the White Cliffs - the healthiest option!

Tucked away behind the towering white cliffs and adjacent to the South Foreland valley, part of a designated area of outstanding natural beauty, you'll find the village of St. Margaret's Bay.



Visit [www.firstlightcoast.com](http://www.firstlightcoast.com) for further information on the area

### Admission

Open all year daily   
10.00 – 17.00

Admission to garden\*:  
Adults £3.00 Children 50p  
Concession £2.50 Wheelchair users £1.00

Tea Room opening hours (April to October):  
Wednesday to Sunday and Bank Holidays  
10.00 – 16.30

Group visits to the Pines Garden and Calyx are welcome by prior arrangement.

Beach Road, St Margaret's Bay, Nr Dover, Kent CT15 6DZ



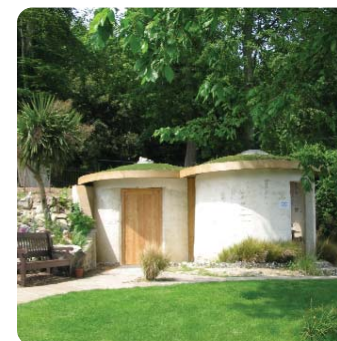
Tel: 01304 851737  
Email: [enquiries@baytrust.org.uk](mailto:enquiries@baytrust.org.uk)  
Web: [www.baytrust.org.uk](http://www.baytrust.org.uk)

The Bay Trust Registered  
Charity No.1026765

\*2010/11  Recycled paper



# The Pines Garden



[www.pinesgarden.co.uk](http://www.pinesgarden.co.uk)

# The Pines Garden

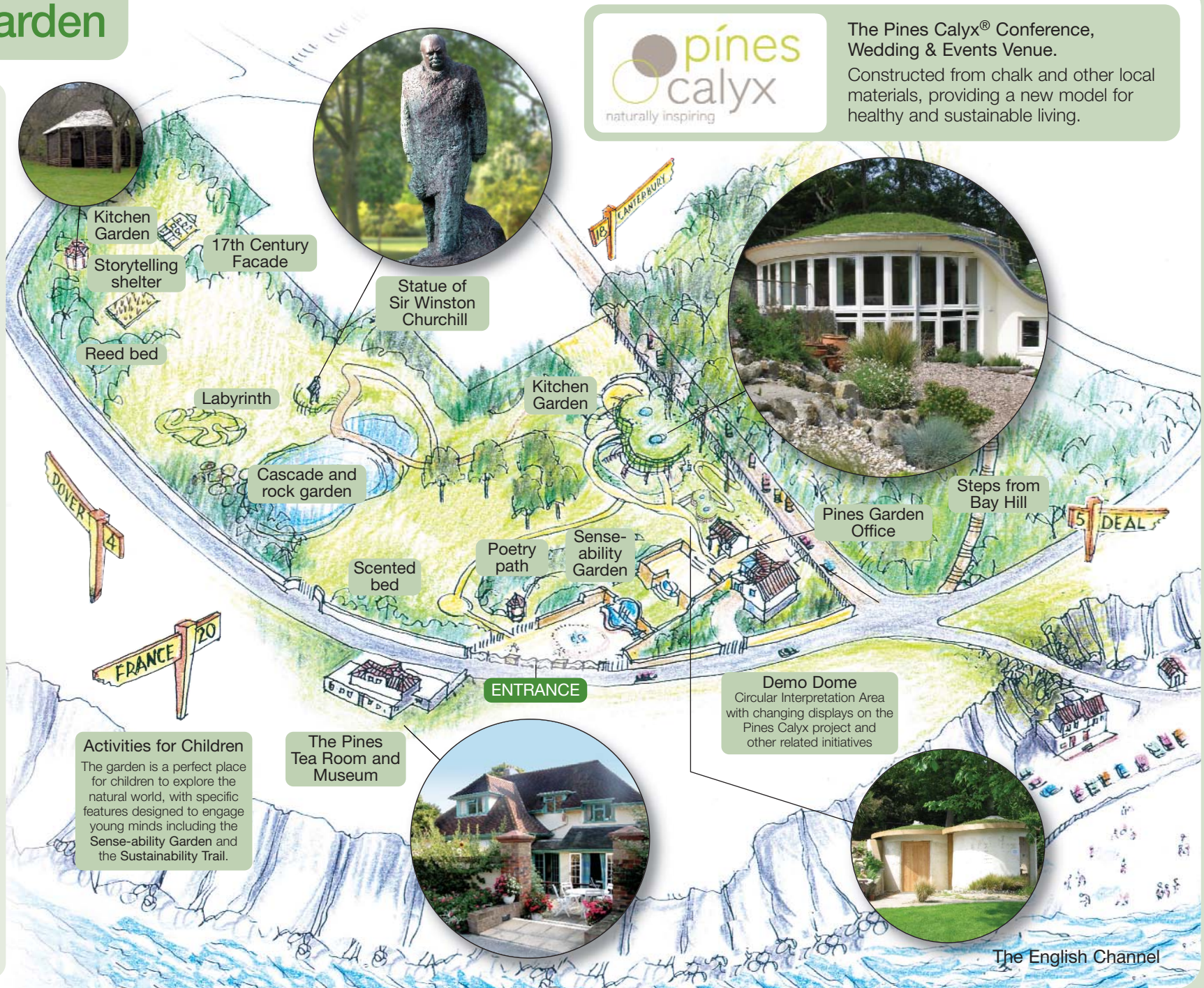
The Pines Garden explores old and new models for sustainable land management and sustainable living.

Its approach to working in harmony with the earth's natural systems stretches beyond the 6 acres of organically managed garden to the naturally inspiring 'Pines Calyx', the UK's most sustainable conference, wedding, and events building, built from the chalk of the immediate local landscape.

The garden's Tea Room further exemplifies this approach by drawing on fresh, local produce to deliver delicious refreshments to the garden's visitors. You can discover over 40 different species of fruit and vegetables, from the exotic to the familiar, growing in the Garden, all being used by our catering team.

There are extensive paths for buggy and wheelchair access, and lots of seating for visitors to come and relax at any time of the year.

Take time out to wander down to the beach or stroll up to the magnificent cliff top, all within a few minutes walk.



The Pines Calyx® Conference, Wedding & Events Venue. Constructed from chalk and other local materials, providing a new model for healthy and sustainable living.

**Activities for Children**  
The garden is a perfect place for children to explore the natural world, with specific features designed to engage young minds including the Sense-ability Garden and the Sustainability Trail.

**The Pines Tea Room and Museum**

**Demo Dome**  
Circular Interpretation Area with changing displays on the Pines Calyx project and other related initiatives